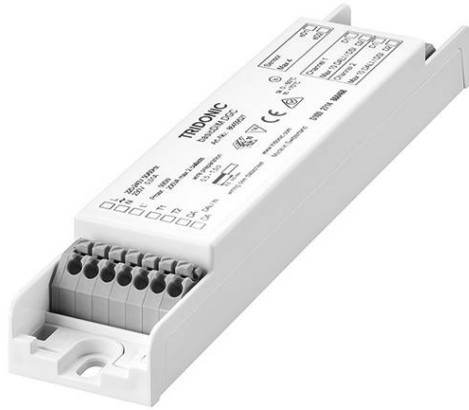


basicDIM DGC

Compact control module with 2 momentary-action switches input and 1 relais output

**Product description**

- _ Compact dimensions for luminaire installation
- _ For up to 20 DSI or DALI devices (max. 10 per output channel)
- _ DALI IN input
- _ 2 DALI/DSI output channels with adjustable negative off set from channel 2 to channel 1
- _ 1 relais output
- _ Sensor input for up to 4 basicDIM DGC sensors 5DPI 14
- _ 2 switch inputs for on/off switching and dimming
- _ Individual adjustment of the parameters with basicDIM DGC Programmer or software masterCONFIGURATOR
- _ 5-year guarantee

Website

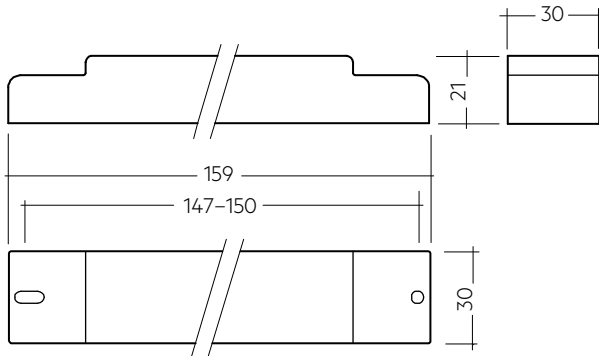
<http://www.tridonic.com/28000920>



basicDIM DGC

Compact control module with 2 momentary-action switches input and 1 relays output

The complete data sheet for this product is available in the Downloads section.



Ordering data

Type	Article number	Mounting	Packaging, carton
basicDIM DGC	28000920	Luminaire installation	10 pc(s).

Technical data

Rated supply voltage	220 – 240 V
Mains frequency	50 / 60 Hz
Power	2.5 W
Output, stand-by	0.5 W
Current draw, input (DALI bus)	2 mA
Operating temperature	0 ... +60 °C
Storage temperature ts	-25 ... +70 °C
Type of protection	IP20
Max. casing temperature tc	70 °C
Dimensions L x W x H	159 x 30 x 21 mm

Approval marks



Standards

EN 55015, EN 61000-3-2, EN 61347-1, EN 61347-2-11, EN 61547, EN 62386-101 (DALI-2), EN 60598-1, EN 62493

Specific technical data

Type	Inputs				Outputs				CH2 as Link Line		Output, relay (L')			
	Dimming momentary-action switch	Max. cable length at 1.5 mm ²	Max. basicDIM DGC sensors	Max. sensor line length at 0.2 – 1.5 mm ²	Digital control line DS/DALI	Control output per physical output (devices)	Dimming range	Max. cable length at 1.5 mm ²	Voltage DC	Max. cable length at 1.5 mm ²	Number of combinable modules	Max. switching output (e.g. LCA)	Max. switching output [VA]	Max. switching output [W]
basicDIM DGC	double	100 m	4	10 m	2	10	1 – 100 %	100 m	13 V	100 m	10	2	200 VA	500 W